

Technical data

Supply Voltage: 220-240V~ 50Hz | LED Voltage: 24V DC

Bulb Type: 36W LED module (SMD) RGB



Conformity with all relevant UKCA Directive requirements.



Conformity with all relevant EC Directive requirements.



The power supply is Double Insulated and does not require connection to an Earth circuit.



Waste electrical products should not be disposed of with household waste. Please recycle where facilities exist. Check with your Local Authority or local store for recycling advice.



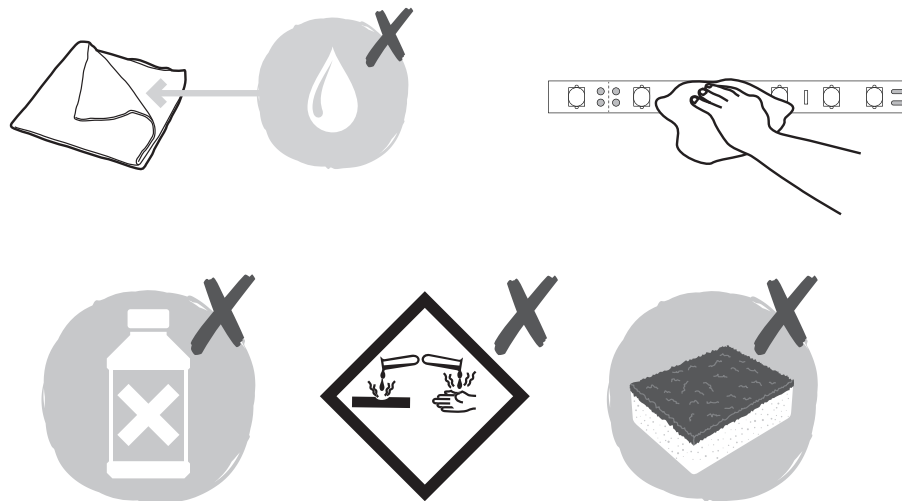
This product is suitable for dimming with 'TUYA' app, Amazon Echo or Google Home.



This product is rated at IP65.

Care and Safety

We recommend cleaning with a soft dry cloth. Do not use solvents or abrasive cleaners as these could damage the LED's. For your safety, always switch off the power supply before changing lightbulbs, or cleaning.



V2 14/07/2022

UK Manufacturer: BH17 7BY
EU Manufacturer: Brilliant AG,
Brillantstrasse 1, D-27442 Gnarrenburg

saxby
lighting

Instruction manual

OrionSMART 5M Kit RGB

99055



www.saxbylighting.com

saxby
lighting

Thank you for purchasing this light fitting. Please read the instructions carefully before use to ensure safe and satisfactory operation of this product. Please retain these instructions for future reference.

Warning

The power supply is Double Insulated and does not require connection to an Earth circuit.

The LED strips are Safety Extra Low Voltage and must not be earthed.

Please read these instructions carefully before commencing any work.

This unit must be fitted by a competent and qualified electrician.

Install in accordance with the IEE Wiring regulations and current Building Regulations.

Check the pack and make sure you have all the parts listed.

To prevent electrocution switch off at the mains supply before installing or maintaining this fitting. Ensure other persons cannot restore the electrical supply without your knowledge. If you are in any doubt, please consult a qualified electrician.

If replacing an existing fitting, make a careful note of the connections.

The mains plug must be situated indoors (e.g. house, garage, shed) in order to protect it from the elements.

This system operates at Safety Extra Low Voltage (24V d.c.), via a LED drive. Never connect the LED strips directly to the mains without using the correct LED driver.

Do not exceed the LED driver load. LED drivers may require a minimum load to operate.

Always unplug the LED driver from the mains when installing or maintaining this system.

This product contains non-replacable parts and cannot be serviced. If damage occurs the part should be scrapped.

Waste electrical products should not be disposed of with household waste. Please recycle where facilities exist. Check with your local authority or retailer for recycling advice.

Layout

This is a self contained kit and cannot be extended.

The OrionSMART LEDs are mounted on a sticky tape which can be stuck to most surfaces.

Plan the desired layout of this fitting carefully, ensuring the cables will reach the distance between the power supply and the OrionSMART LEDs.

Avoid locating any cables in positions that would cause a hazard. Position cables and OrionSMART LEDs away from areas where they may be at risk from being cut, trapped or damaged.

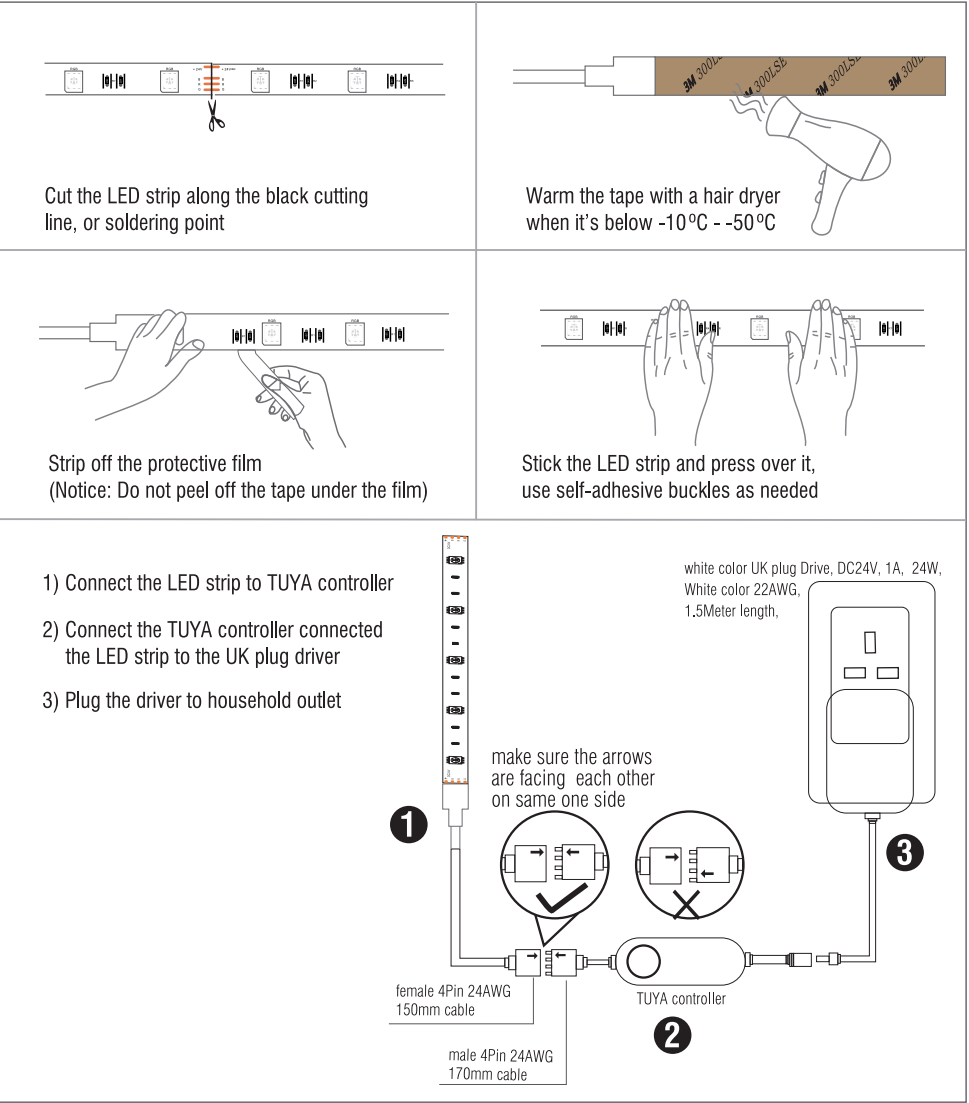
Cables in walls must be protected using suitable conduit or plastic trunking.

Installation

Choose a dry, clean and smooth surface. Position the UK plug driver, TUYA controller controller next to the mains outlet socket that the system will connect to. Do not plug-in at this stage.

After deciding the layout of the LED strips, ensure the cables are long enough to connect to the desired positions.

The OrionSMART LEDs can be shortened to a minimum of 100mm or multiples of 100mm.



This product is suitable for dimming with 'Tuya' app, Amazon Echo or Google Home.
We recommend putting the wifi receiver within 20-25 meters of your WI-FI Hub. This will vary depending on the strength of your WI-FI coverage.
We recommend testing the position before full installation.