

EPA/STD SS

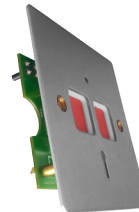
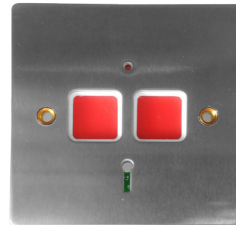
Stainless Steel Flat Plate Panic Button



The original electronic Hold-Up Device is now available with a stainless steel flat plate. This is a flush fitting which allows the device to be mounted in a standard UK gang box, thanks to its flat face and recessed buttons.

**GRADE 3
COMPLIANT**

- 8 Terminals
- Double Push
- Flush Fitting
- Stainless Steel
- Fit into a single back box
- Key Resettable
- LED Indicator
- Self Latching
- Front Plate Size 85 x 85 x 1mm



Specifications

	EPA/STD-SS
Connections	8 PCB Terminals
Operation Method	Dual Push Button
Material	ABS / Stainless Steel
Dimensions mm	85 x 85 x 16
PA Output	N/O or N/C
Voltage	12v DC
Current	45mA @ 12Vdc
Tamper	RFMS (Rear Tamper)
Reset Method	Key
Colours	Stainless Steel
Standards	EN50131-1 Grade 3 & PD6662:2010
Environmental Class	II



Contact us:

Phone:

Tel: +44(0)151 6061000
Fax: +44(0)151 6061122

Online:

Web: www.cqr.co.uk
Email: info@cqr.co.uk

Address: CQR Fire & Security, 125 Pasture Road, Moreton, Wirral, CH46 4TH, UK.

