



New Media™ Plates & Modules





Solutions for all Manner of Media Cabling Problems

Contents

New Media™ Plates	k5
Deco Plus® Unfurnished Plates	k9
Deco® Unfurnished Plates	k10
Define® Unfurnished Plates	k11
Definity™ Unfurnished Plates	k12
Mode® Unfurnished Plates	k13
Part M™ Unfurnished Plates	k13
Polar™ Unfurnished Plates	k13
Metal Clad Unfurnished Plates	k14
New Media™ Modules	k16
Typical Sky+ Installation	k24
Typical Sky+ HD Installation	k25
Technical Details	k26

k5	The modern home is now more than a mere home. It doubles up occasionally as a cinema, concert hall, meeting venue and computer room etc.. Each of these functions brings with it its own unique requirements in terms of the provision of necessary services such as telephone or satellite sockets etc.
----	--

k12	Even in recent memory designers and builders did not think beyond providing a perfunctory level of electrical switches, sockets and pendant light fittings in a new home.
-----	---

k13	Nowadays, as well as providing an ever increasing number of these items, provision must be made for the myriad different electrical and electronic products which proliferate our homes.
-----	--

Traditionally, products such as telephone and TV coaxial sockets etc. have all been supplied built into a standard size wall plate. The environment in today's office and home however requires a number of services to be provided to a specific work station or convenient access point. The most flexible and efficient means of doing this is the use of modules on a multiple aperture plate.

The New Media™ range illustrated in the following pages encompasses a wide range of media and power modules, providing the designer and installer a host of solutions for all manner of media cabling problems.

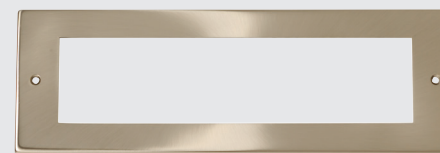


New Media™ Plates

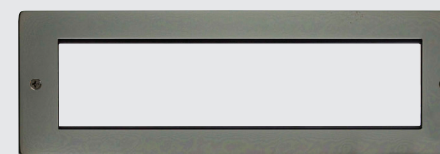
The brief given to our designers charged with the task of developing the New Media™ range was to produce a comprehensive yet flexible and user friendly 'system' which enables the installer to easily create topical media and power cabling solutions.

All of the modules featured in this brochure are of the standard euro grid configuration based on 1 aperture modules of 25 x 50mm. Mounting plates are available as wall or floor plates and can accommodate 1 – 16 modules according to requirements.

Instead of numerous unsightly individual sockets, a single New Media™ plate can be used at a convenient point to bring together any combination of media modules. The individual modules are available in black or white finish and are suitable for mounting on blank plates from selected accessory ranges, namely the Polar™ and Mode® moulded accessory ranges, the Click® metal clad range plus the Deco®, Define® and Definity™ decorative metal ranges.



MP508



MP608



The furnished plates illustrated above contain 6 x 1 aperture and 1 x 2 aperture media modules (above) and 4 x 2 aperture 13A socket outlet modules (above).

New Media™ Back box MP520 required, see page k8.

Small Unfurnished Front Plates - 8 Apertures

- MP508AB** Small New Media™ Unfurnished Front Plate - 8 Apertures - Antique Brass
- MP508BR** Small New Media™ Unfurnished Front Plate - 8 Apertures - Polished Brass
- MP508PN** Small New Media™ Unfurnished Front Plate - 8 Apertures - Pearl Nickel
- MP508SB** Small New Media™ Unfurnished Front Plate - 8 Apertures - Satin Brass
- MP508CH** Small New Media™ Unfurnished Front Plate & Yoke - 8 Apertures - Polished Chrome

The yoke 'MP510' is required to mount the media modules into prior to assembling the frontplate, see page k8.

Small New Media™ Unfurnished Front Plate & Yoke - 8 Apertures

- CMA608** Small New Media™ Unfurnished Front Plate & Yoke - 8 Apertures - White
- MP608**** Small New Media™ Unfurnished Front Plate & Yoke - 8 Apertures

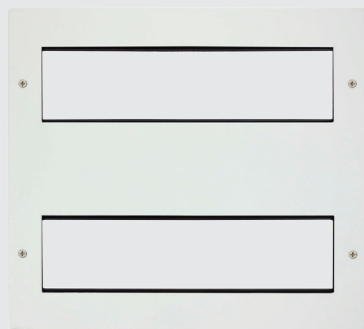
Back Box Depth: 47mm Minimum **Cable Size:** Dependant on modules used
Dimensions: 250mm x 87mm x 8mm

Understanding the code:

MP - Plate Style **508** - Product No. **BN** - Plate Finish. **AB** Antique Brass, **BR** Polished Brass, **SB** Satin Brass, **CH** Polished Chrome, **SC** Satin Chrome, **BN** Black Nickel, **PN** Pearl Nickel, **BS** Brushed Stainless, **SS** Stainless Steel, **PW** Polar White



MP516



MP616



The furnished plate illustrated above contains 8 single New Media™ modules (top row) and 4 twin width socket outlet modules (bottom row).

The yoke 'MP510' (x2) is required to mount the media modules into prior to assembling the frontplate.

Back box MP525 required, see page k8.

Large Unfurnished Front Plates - 2 x 8 Apertures

MP516AB	Large New Media™ Unfurnished Front Plate - 2 x 8 Apertures - Antique Brass
MP516BN	Large New Media™ Unfurnished Front Plate - 2 x 8 Apertures - Black Nickel
MP516BR	Large New Media™ Unfurnished Front Plate - 2 x 8 Apertures - Polished Brass
MP516BS	Large New Media™ Unfurnished Front Plate - 2 x 8 Apertures - Brushed Stainless
MP516CH	Large New Media™ Unfurnished Front Plate - 2 x 8 Apertures - Polished Chrome
MP516PN	Large New Media™ Unfurnished Front Plate - 2 x 8 Apertures - Pearl Nickel
MP516SS	Large New Media™ Unfurnished Front Plate - 2 x 8 Apertures - Stainless Steel

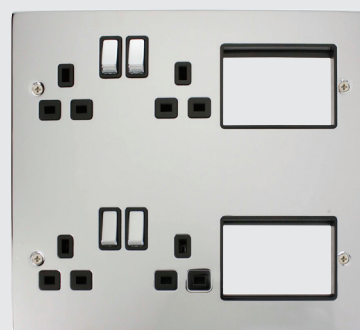
Large New Media™ Unfurnished Front Plate & Yoke - 2 x 8 Apertures

CMA616	Large New Media™ Unfurnished Front Plate & Yokes - 2 x 8 Apertures - White
MP616**	Large New Media™ Unfurnished Front Plate & Yoke - 2 x 8 Apertures

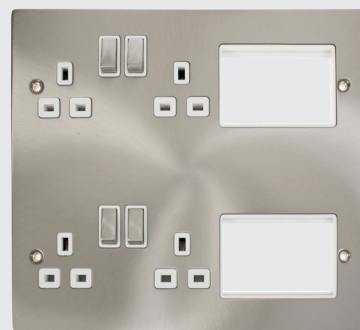
Back Box Depth: 47mm Minimum **Cable Size:** Dependant on modules used
Dimensions: 250mm x 216mm x 8mm

Understanding the code:

MP - Plate Style **508** - Product No. **BN** - Plate Finish. **AB** Antique Brass, **BR** Polished Brass, **SB** Satin Brass, **CH** Polished Chrome, **SC** Satin Chrome, **BN** Black Nickel, **PN** Pearl Nickel, **BS** Brushed Stainless, **SS** Stainless Steel, **PW** Polar White



MP606CHBK



MP606SCWH



MP606PW

All plates supplied with black and white gaskets where applicable.
Product is supplied with 4 x 13A DP switched sockets. Back box MP525 required, see following page.

2 Tier Semi-Modular Unfurnished Plates

MP606** Large New Media™ Part Furnished Front Plate - 4 x 13A DP Switched Sockets & 2 x 3 Apertures

*Available in Chrome (CH), Satin Chrome (SC) and Polar™ White (PW)

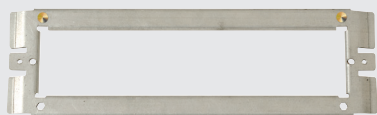
Back Box Depth: 47mm Minimum **Cable Sizes:** 13A 4 x 2.5mm
Dimensions: 250mm x 216mm x 8mm

Understanding the code:

MP - Plate Style **508** - Product No. **BN** - Plate Finish. **CH** Polished Chrome, **SC** Satin Chrome, **PW** Polar White



MP525



MP510



MP520

Yoke

MP510 New Media™ Yoke - 8 Apertures

Divider Plates

MP521 Divider Plate 47mm Deep for MP520 (76mm x 44mm)
MP526 Divider Plate 47mm Deep for MP525 (93mm x 44mm)
MP536 Diver Plate 35mm Deep for MP535

Back Boxes

MP520 47mm Deep New Media™ Back Box - 8 Apertures
MP525 47mm Deep New Media™ Back Box With Central Divider - 2 x 8 Apertures
MP535 35mm Deep New Media™ Back Box With Central Divider - 2 x 8 Apertures

Galvanised steel back boxes supplied for flush mounting of media plates. Mounting yoke facilitates pre-assembly of required modules. Fitted with twin earth terminals.

Divider plates can be installed as necessary in order to screen sensitive modules.

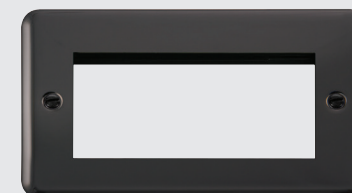
Dimensions: **MP521:** (76mm x 44mm) **MP526:** (93mm x 44mm)
Cutout Sizes: **520:** 225mm x 75mm **525:** 225mm x 194mm



DPCH310



DPSB311



DPBN312

Unfurnished Plates - New Media™

DP310** 1 Gang New Media™ Unfurnished Plate - 1 Aperture
DP311** 1 Gang New Media™ Unfurnished Plate - 2 Apertures
DP312** 2 Gang New Media™ Unfurnished Plate - 4 Apertures

Please add 2 letter prefix to identify required finish i.e. DPCH311 for polished chrome.

Back Box Depth: Dependant on modules used **Cable Size:** Dependant on modules used
Dimensions: **1 Gang:** 88mm x 88mm x 8mm, **2 Gang:** 148mm x 88mm x 8mm,

Understanding the code:

DP - Plate Style **BN** - Plate Finish **311** - Product No.
AB Antique Brass, **BR** Polished Brass, **SB** Satin Brass, **CH** Polished Chrome, **SC** Satin Chrome, **BN** Black Nickel, **SS** Stainless Steel.

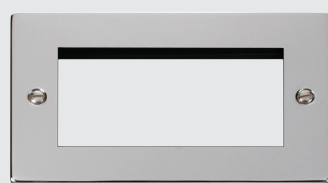




VPAB310



VPBN311



VPCH312

**Unfurnished Plates - New Media™**

- VP**310** 1 Gang New Media™ Unfurnished Plate - 1 Aperture
VP311** 1 Gang New Media™ Unfurnished Plate - 2 Apertures
VP312** 2 Gang New Media™ Unfurnished Plate - 4 Apertures

Please add 2 letter prefix to identify required finish i.e. VPCH311 for chrome.

Back Box Depth: 310, 311, 312: Dependant on module used **MP606:** 47mm Minimum **Cable Size:** Dependant on module used
Dimensions: 1 Gang: (88mm x 88mm x 8mm), 2 Gang: (146mm x 88mm x 8mm)

Understanding the code:

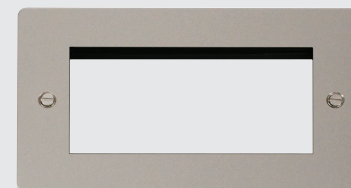
VP - Plate Style **BN** - Plate Finish **311** - Product No. **BK** - Insert Colour. **Please note:** AB & BN are only available with black inserts.
AB Antique Brass, **BR** Polished Brass, **SB** Satin Brass, **CH** Polished Chrome, **SC** Satin Chrome,
BN Black Nickel, **SS** Stainless Steel, **PN** Pearl Nickel, **GCBR** Georgian Style.



FPBS310



FPCH311



FPPN312

**Unfurnished Plates - New Media™**

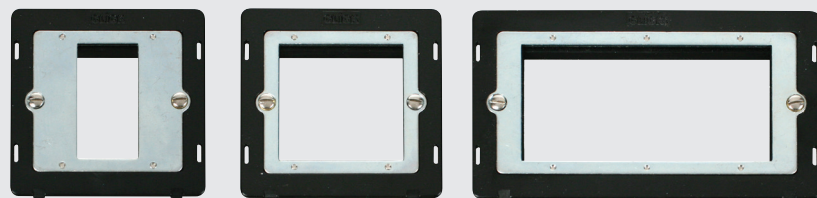
- FP**310** 1 Gang New Media™ Unfurnished Plate - 1 Aperture
FP311** 1 Gang New Media™ Unfurnished Plate - 2 Apertures
FP312** 2 Gang New Media™ Unfurnished Plate - 4 Apertures

Please add 2 letter prefix to identify required finish i.e. FPCH311 for polished chrome.

Back Box Depth: 310, 311, 312: Dependant on module used **MP606:** 47mm Minimum **Cable Size:** Dependant on module used
Dimensions: 1 Gang: (88mm x 88mm x 1.3mm*), 2 Gang: (146mm x 88mm x 1.3mm*) *Excluding gasket

Understanding the code:

FP - Plate Style **BN** - Plate Finish **311** - Product No. **BK** - Insert Colour.
BS Brushed Stainless, **BN** Black Nickel, **PN** Pearl Nickel, **CH** Polished Chrome and **SS** Stainless Steel



SIN310BK

SIN311BK

SIN312BK



SCP310CH

SCP311SS

SCP312BS

definity™

Please refer to page "New Media™ Plates" on page e50 for more information.

New Media™ Unfurnished Plate Inserts

- SIN310BK** 1 Gang New Media™ Unfurnished Plate Insert - 1 Aperture
SIN311BK 1 Gang New Media™ Unfurnished Plate Insert - 2 Apertures
SIN312BK 2 Gang New Media™ Unfurnished Plate Insert - 4 Apertures

New Media™ Cover Plates

- SCP310** 1 Gang New Media™ Cover Plate - 1 Aperture
SCP311 1 Gang New Media™ Cover Plate - 2 Apertures
SCP312 2 Gang New Media™ Cover Plate - 4 Apertures

Back Box Depth: Dependant on module used **Cable Size:** Dependant on modules used
Dimensions: **1 Gang:** (86mm x 86mm x 4mm), **2 Gang:** (146mm x 86mm x 4mm)

Understanding the code:

SIN - Insert Prefix **311** - Product No **BK** - Insert Colour **SS** - 'INGOT' Switch Finish (if applicable).
SCP - Definity™ Cover Plate Prefix **311** - Product No **SS** - Plate Colour. Definity™ plates are coated stainless steel
CH Chrome, **SS** Stainless Steel, **BS** Brushed Stainless, **PW** Polar White, **BK** Black, **RD** Red



CMA310

CMA311AG

PRW312

MODE®**Part M Range™****polar™****Mode® Unfurnished Plates - New Media™**

- CMA310** 1 Gang New Media™ Unfurnished Plate - 1 Aperture
CMA311 1 Gang New Media™ Unfurnished Plate - 2 Apertures
CMA312 2 Gang New Media™ Unfurnished Plate - 4 Apertures

Part M™ Range Unfurnished Plates - New Media™

- CMA310AG** 1 Gang New Media™ Unfurnished Plate - 1 Aperture
CMA311AG 1 Gang New Media™ Unfurnished Plate - 2 Apertures
CMA312AG 2 Gang New Media™ Unfurnished Plate - 4 Apertures

Polar™ Unfurnished Plates - New Media™

- PRW310** 1 Gang New Media™ Unfurnished Plate - 1 Aperture
PRW311 1 Gang New Media™ Unfurnished Plate - 2 Apertures
PRW312 2 Gang New Media™ Unfurnished Plate - 4 Apertures

Back Box Depth: Dependant on module used **Cable Size:** Dependant on modules used
Dimensions: **Mode® & Part M™:** **1 Gang:** (86mm x 86mm x 9.5mm), **2 Gang:** (146mm x 86mm x 9.5mm)
Polar™: **1 Gang:** (86mm x 86mm x 11mm), **2 Gang:** (146mm x 86mm x 11mm)

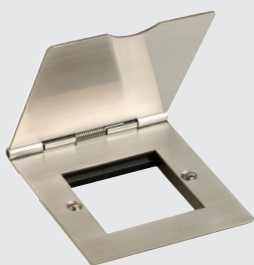




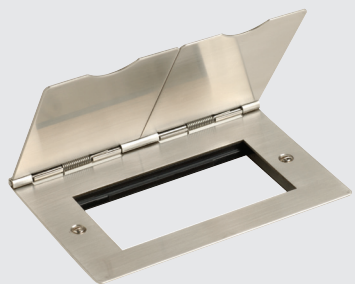
CL311



CL312



FS311SS



FS312SS

essentials™

Unfurnished Plates - New Media™

CL311 1 Gang New Media™ Unfurnished Plate - 2 Apertures

CL312 2 Gang New Media™ Unfurnished Plate - 4 Apertures

Unfurnished Floor Plates - For Use With New Media™ Modules

FS311SS 1 Gang New Media™ Unfurnished Floor Plate - 2 Apertures

FS312SS 2 Gang New Media™ Unfurnished Floor Plate - 4 Apertures

Back Box Depth: CL311/312: 40mm Minimum FS311SS/FS312SS: 35mm Minimum
Dimensions: CL311: 80mm x 80mm x 44mm CL312: 140mm x 80mm x 44mm FS311SS: 86mm x 93mm FS312SS: 146mm x 93mm

New Media™ Modules

The New Media™ modules offer a flexible build solution to a host of individual media transfer requirements. The clip fit grid modules are simple to install in their blank mounting plates.





MM405WH

MM406BK

MM410WH

MM415BK

MM450WH



MM405
(Back)

MM406
(Back)

MM410
(Back)

MM415
(Back)

MM450
(Back)

TV/Satellite Modules - Single Width (25mm x 50mm)

- MM405BK** Single Female Satellite Module - Black
MM405WH Single Female Satellite Module - White
- MM406BK** Twin Female Satellite Module (F to F Connection) - Black
MM406WH Twin Female Satellite Module (F to F Connection) - White
- MM410BK** Single Female Coaxial Module - Black
MM410WH Single Female Coaxial Module - White
- MM415BK** Single Male Coaxial Module - Black
MM415WH Single Male Coaxial Module - White
- MM450BK** Blank Module - Black
MM450WH Blank Module - White

Back Box Depth: 35mm Minimum **Dimensions:** 25mm x 50mm



MM420BK

MM425WH

MM430BK

MM440WH



MM420
(Back)

MM425
(Back)

MM430
(Back)

MM440
(Back)

All diplexed, triplexed and quad modules require installation of a signal combining distribution amplifier.
 Not suitable for use in the Republic of Ireland.

Media Modules - Twin Width (50mm x 50mm)

- MM420BK** Diplexed TV And Radio Module - Black
MM420WH Diplexed TV And Radio Module - White
- MM430BK** Triplexed TV, Radio & Satellite Module - Black
MM430WH Triplexed TV, Radio & Satellite Module - White
- MM440BK** Quad TV, Radio, Sat 1 & Sat 2 Module - Black
MM440WH Quad TV, Radio, Sat 1 & Sat 2 Module - White

TV/Satellite Modules - Twin Width (50mm x 50mm)

- MM425BK** Diplexed TV And Satellite Module - Black
MM425WH Diplexed TV And Satellite Module - White

Module	Number of Inputs	Number of outputs	Signals on input 1	Signals on input 2
MM420	1	2	TV, Radio	
MM425	1	2	TV, Sat 1	
MM430	1	3	TV, Sat 1, Radio	
MM440	2	4	TV, Sat 1, Radio	Sat 2

Back Box Depth: 47mm Minimum **Dimensions:** 50mm x 50mm



MM460BK

MM465WH

MM470BK

MM480WH

MM485BK

MM460
(Back)MM465
(Back)MM470
(Back)MM480
(Back)MM485
(Back)

All New Media™ RJ45 modules are non-screened and are suitable for use with either Type A or Type B wiring conventions.

Telephone/Data Modules - Single Width (25mm x 50mm)

MM460BK	Telephone Master Module - Black
MM460WH	Telephone Master Module - White
MM465BK	Telephone Secondary Module - Black
MM465WH	Telephone Secondary Module - White
MM480BK	RJ45 Cat-5e Module - Black
MM480WH	RJ45 Cat-5e Module - White
MM485BK	RJ45 Cat-6 Module - Black
MM485WH	RJ45 Cat-6 Module - White
MM470BK	RJ11 Module - Black
MM470WH	RJ11 Module - White

Back Box Depth: 35mm Minimum Dimensions: 25mm x 50mm



MM002BK

MM022WH

MM023BK

MM025WH

MM047BK

MM002
(Back)MM022
(Back)MM023
(Back)MM025
(Back)MM047
(Back)

Switch Modules - Single Width (25mm x 50mm)

MM002BK	10AX 2 Way Switch Module - Black
MM002WH	10AX 2 Way Switch Module - White
MM025BK	10AX Intermediate Switch Module - Black
MM025WH	10AX Intermediate Switch Module - White
MM022BK	20A DP Switch Module - Black
MM022WH	20A DP Switch Module - White
MM023BK	20A DP Switch With Neon Module - Black
MM023WH	20A DP Switch With Neon Module - White

13A Fused FCU Modules - Single Width (25mm x 50mm)

MM047BK	13A Fused FCU Module - Black
MM047WH	13A Fused FCU Module - White

Standards: BS EN 60669, 047: BS 1363

Back Box Depth: 35mm Minimum Cable Size: 022 / 023: 1 x 6mm² / 3mm x 2.5mm² Dimensions: 25mm x 50mm



MM010BK



MM020WH



MM030BK



MM033WH



MM038WH



MM515



MM515



MM490BK



MM495WH



MM550WH



MM1000



MM490
(Back)



MM495
(Side)



MM501BK

HDMI Outlet with Flexible
Connection (80mm Long)

A versatile 50mm x 50mm euro module LED, which clips into a '311' or '312' New Media™ plate. Utilises a standard wiring accessory back box. Please see page k5 for more information on New Media™ plates.

Socket Outlet Modules - Twin Width (50mm x 50mm)

MM010BK 13A UK Socket Module - Black
MM010WH 13A UK Socket Module - White

MM020BK 16A European Schuko Socket Module - Black
MM020WH 16A European Schuko Socket Module - White

Not suitable for use with metal clad boxes CL311 and CL312 (40mm).
MM020 requires CL087 (1 gang 50mm) or CL088 (2 gang 50mm) if required.

MM030BK 16A 110V US Socket Module - Black
MM030WH 16A 110V US Socket Module - White

MM033BK 15A Round Pin Socket Module - Black
MM033WH 15A Round Pin Socket Module - White

MM038BK 5A Round Pin Socket Module - Black
MM038WH 5A Round Pin Socket Module - White

USB Charging Modules - Single Width (25mm x 50mm)

MM515 2A USB Charging Module - Black & White
Supplied with black and white frontplates

LED Euromods - Twin Width (50mm x 50mm)

MM1000BL 240V 1W LED Euromod - Blue
MM1000CW 240V 1W LED Euromod - Cool White
MM1000WW 240V 1W LED Euromod - Warm White

Speaker Modules - Single Width (25mm x 50mm)

MM490BK RCA/Phono Module (2 Outlets) - Black
MM490WH RCA/Phono Module (2 Outlets) - White
MM495BK Loudspeaker Module (2 Outlets) - Black
MM495WH Loudspeaker Module (2 Outlets) - White

TV/Satellite Modules - Single Width (25mm x 50mm)

MM501BK HDMI With Fly-Lead Module - Black
MM501WH HDMI With Fly-Lead Module - White

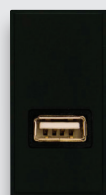
Brush Modules - Single Width (25mm x 50mm)

MM550BK Single Brush Module - Black (Black Bristles)
MM550WH Single Brush Module - White (Black Bristles)
MM550WHWH Single Brush Module - White (White Bristles)



Modular LED stairlight fitted into a
Define® New Media™ plate

Standards: 010: BS 1363, 033 & 038: BS 546, 030: UL498, 020: IEC 60884 - SS428 0834
Back Box Depth: 35mm Minimum, MM020: 47mm Minimum **Cable Size:** 1 x 6mm² / 3 x 2.5mm² **Dimensions:** 50mm x 50mm



MM300BK



MM305WH



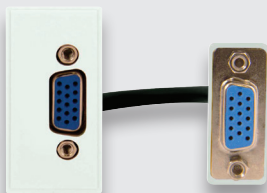
MM491BK



MM496WH



MM300
(with fly-lead)



MM305
(with fly-lead)



MM491
(Back)



MM496
(with fly-lead)

Media Modules - Single Width (25mm x 50mm)

MM300BK	USB Throughput With Fly-Lead Module - Black
MM300WH	USB Throughput With Fly-Lead Module - White
MM305BK	VGA With Fly-Lead Module - Black
MM305WH	VGA With Fly-Lead Module - White
MM491BK	Triple RCA Module (With Screw Terminals) - Black
MM491WH	Triple RCA Module (With Screw Terminals) - White
MM496BK	3.5mm Audio Jack With Fly-Lead Module - Black
MM496WH	3.5mm Audio Jack With Fly-Lead Module - White



SP620BK



SP620WH



MM620BK



SP620BKSB



SP620WHBS



Full item requires (MM620BK) switch module, (311) unfurnished plate and (SP620) hotel key card cover plate, see listed products below:

Hotel Key Card Switch Module - Twin Width (50mm x 50mm)

MM620BK	10A/6AX Hotel Key Card Timer Switch (Mechanical) Module Only - Black
	Blue LED illuminates when the key card is removed and the exit time has elapsed.
	Card not supplied. Select cover plate below.

Hotel Key Card Switch Covers

SP620BK	Black
SP620BKAB	Black - Antique Brass
SP620BKBN	Black - Black Nickel
SP620BKBR	Black - Polished Brass
SP620BKBS	Black - Brushed Stainless
SP620BKCH	Black - Polished Chrome
SP620BKPN	Black - Pearl Nickel
SP620BKSB	Black - Satin Brass
SP620BKSC	Black - Satin Chrome
SP620BKSS	Black - Stainless Steel

Hotel Key Card Switch Covers

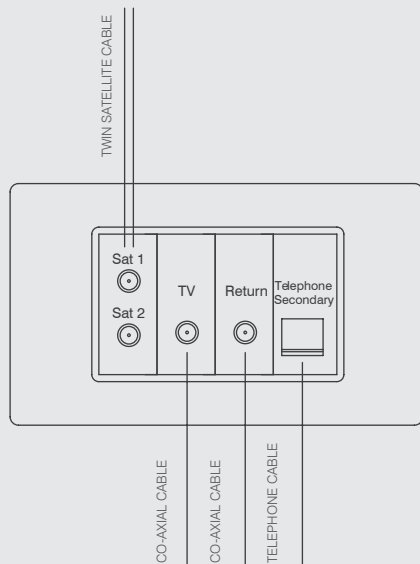
SP620MTBK	Black - Matt Black
SP620PW	White - White (Metal)
SP620WH	White - White (Plastic)
SP620WHBR	White - Polished Brass
SP620WHBS	White - Brushed Stainless
SP620WHCH	White - Polished Chrome
SP620WHPN	White - Pearl Nickel
SP620WHBS	White - Satin Brass
SP620WHSC	White - Satin Chrome
SP620WHSS	White - Stainless Steel

Please note requires mounting plate **311 (see from page k9)

Time setting: 10 seconds to 5 minutes

Standards: BS EN 60669

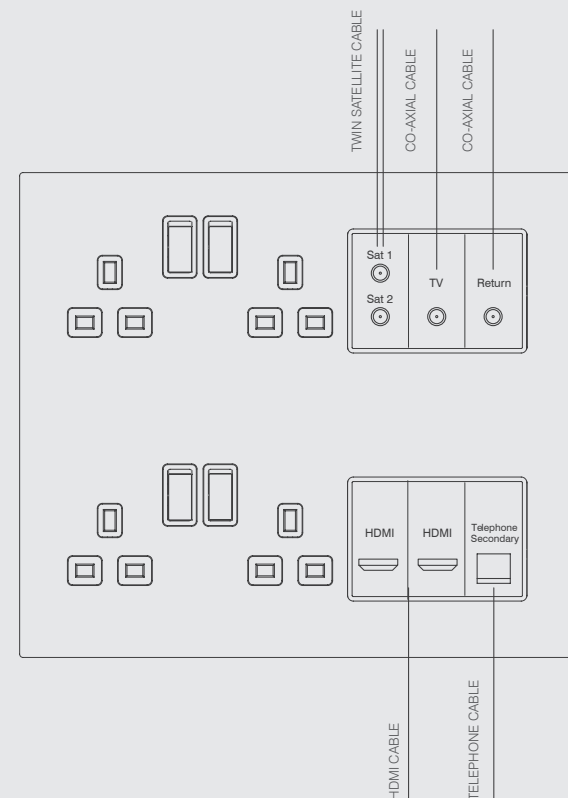
Back box depth: 35mm to 47mm (Dependant on mounting plate) **Cable size:** 2 x 1.5mm²
Key card not included. Accepts standard room cards: 85.6 x 53.98mm



Products Used For This Configuration:

- 1 x **312 Media Plate
- 1 x MM406 Twin Satellite Module
- 1 x MM415 Co-axial Module
- 1 x MM410 Co-axial Module
- 1 x MM465 Telephone Secondary Module

Here, the input cables from the satellite dish and the TV aerial are connected directly to the rear of each module. The return module is provided to allow the Sky signal to be shared throughout the property using a suitable distribution amplifier. The use of a secondary telephone connection allows for easy connection between the Sky box and the telephone line.



Here, the input cables from the satellite dish and the TV aerial are connected directly to the rear of each module. The return module is provided to allow the Sky signal to be shared throughout the property using a suitable distribution amplifier. The use of a secondary telephone connection allows for easy connection between the Sky box and the telephone line. An HDMI module is provided to facilitate a high definition connection between the Sky box and television.

MM405			Single 'F' Satellite
Connection	Frequency	Insertion Loss (dB) (Typical)	
In to Out	5 to 2300 MHz	1.6	
Power pass to connection			
MM410			Single IEC Female
Connection	Frequency	Insertion Loss (dB) (Typical)	
In to Out	5 to 862 MHz	0.3	
Power pass to connection			
MM415			Single IEC Male
Connection	Frequency	Insertion Loss (dB) (Typical)	
In to Out	5 to 862 MHz	0.3	
Power pass to connection			
MM420			Diplexed TV & Radio
Connection	Frequency	Insertion Loss (dB) (Typical)	
In to Radio	87.5 to 230 MHz	2.0	
In to TV	47 to 68 MHz	1.5	
In to TV	254 to 862 MHz	2.0	
Power pass to TV			
MM425			Diplexed TV & Satellite
Connection	Frequency	Insertion Loss (dB) (Typical)	
In to TV	47 to 862MHz	2.0	
In to Satellite	950 to 2150 MHz	2.5	
In to Satellite	2150 to 2400 MHz	3.0	
Power pass to satellite			
MM430			Triplexed TV, Radio & Satellite
Connection	Frequency	Insertion Loss (dB) (Typical)	
In to Radio	87.5 to 230MHz	3.0	
In to TV	47 to 68MHz	2.0	
In to TV	254 to 862MHz	2.0	
In to Satellite	950 to 2300 MHz	3.0	
Power pass to satellite			
MM440			Quad TV, Radio, Satellite 1 & Satellite 2
Connection	Frequency	Insertion Loss (dB) (Typical)	
In to Radio	87.5 to 230MHz	3.0	
In to TV	470 to 862MHz	2.5	
In to Satellite 1	950 to 2300 MHz	3.0	
In to Satellite 2	25 to 2400 MHz	1.5	
Power pass to satellite 1 & satellite 2			