

FS1226-T BATTERY POWERED ENHANCED HEAT ALARM

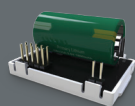
Sensor type	Thermistek
Battery type	10 year sealed for life Panasonic lithium



- **Smart RF Ready** - Fit a Smart RF Radio Module (FS1521W2) to wirelessly interlink up to 50 FireAngel Smart RF products, including FireAngel Connect Gateway.
- Connects directly to the **FireAngel Connect Gateway**, providing enhanced diagnostic capabilities and realtime notifications to mobile devices. (Requires FS1521W2 Smart RF Module)
- Thermistek technology as used by over 90% of the UK Fire and Rescue Services
- Enhanced thermal sensor predicts when the temperature will rise to a dangerous level
- Easily accessible central button - Test / Smart Silence / Locate
- Silence function - allows the alarm to be silenced in the event of a known false alarm
- Suitable to protect the most dangerous room within a home, a kitchen.
- Grade F1 as per BS 5839-6:2019

Technical Specification

Product Dimensions	132mm (diameter) x 60mm (depth)
Supply voltage	3V DC
Battery	10 year sealed for life Panasonic lithium battery
Technology	Thermistek Enhanced Thermal Sensor and Smart RF Ready
Alarm sound level	85dB(A) at 3m (minimum)
Installation positions	Ceiling
For use in:	Kitchen, Garage, Loft
Alarms at temperature range	+54°C to +62°C
Operating temperature	+4°C to +38°C
Operating humidity	Up to 90% RH non-condensing
Storage temperature	-20°C to +60°C
Storage humidity	Up to 93% RH non-condensing
Plastic material	ABS, UL94 VO fire retardant
Warranty	5 years
Master pack quantity	10
Product Weight	143g
Certified to	BS 5446-2: 2003
Operating Frequency	868 MHz



Create a Safety Network

Add a Smart RF Radio Module to wirelessly interlink up to 50 Smart RF devices with a simple 2 step process.



Smoke Alarm



CO Alarm



Wireless Alarm Control Unit



Assisted Living Solutions

For further information or sales enquiries, contact your local Specification Manager:
www.fireangel.co.uk/specification-manager